

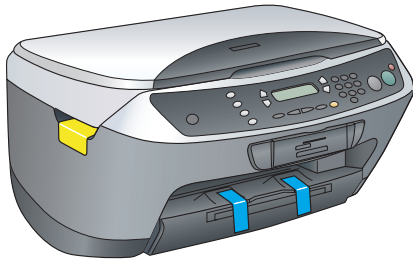
# Start Here

## Epson Stylus® CX6600

4049498-00 XXX

### 1 Unpack

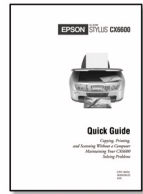
- 1** Make sure you have all the parts shown here. If any parts are missing, contact Epson® as described on the back of this sheet.



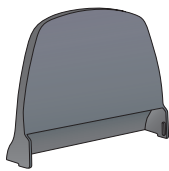
Epson Stylus CX6600



Software CD-ROM



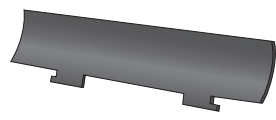
Quick Guide



Paper support



Ink cartridges

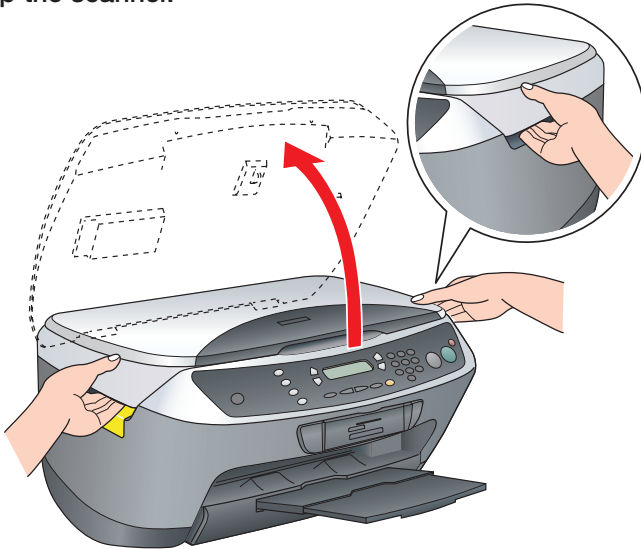


Feeder guard

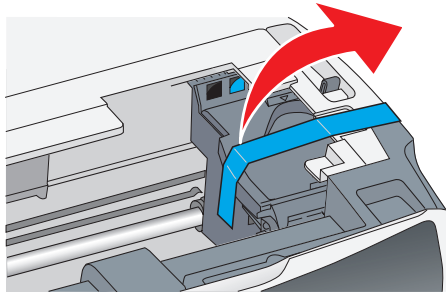
- 2** Remove all the blue packing tape from the printer.

**Caution:** Do not remove the yellow sticker until instructed.

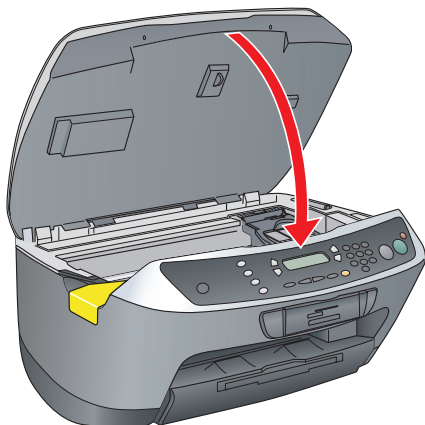
- 3** Lift up the scanner.



- 4** Peel off the tape from the ink cartridge holder.



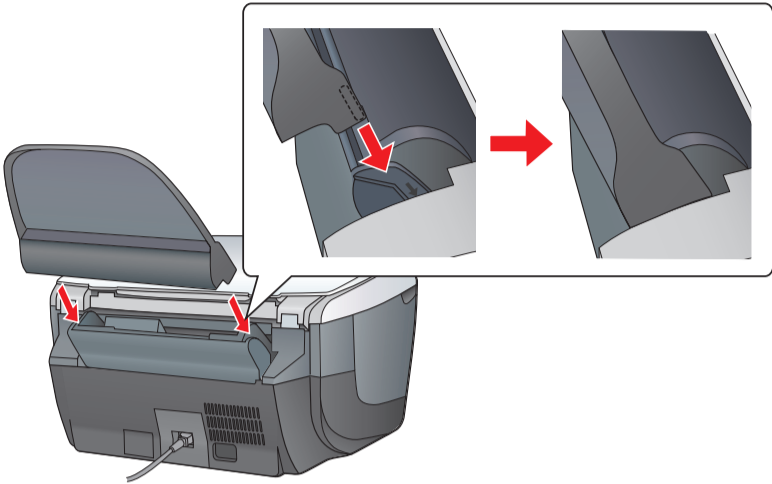
- 5** Close the scanner section.



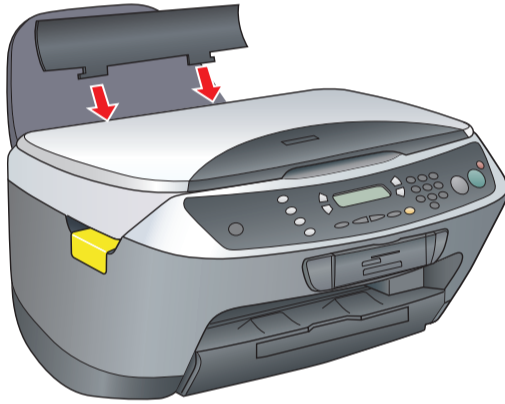
## 2

# Attach the Parts

- 1 Insert the paper support into the slots behind the printer, as shown.



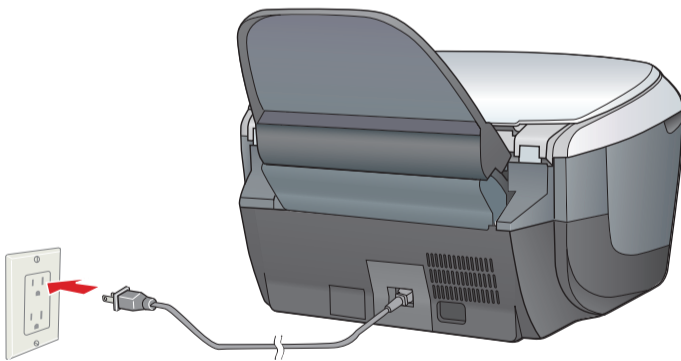
- 2 Lower the feeder guard into the slots behind the scanner lid. (Insert the hinges on the feeder guard into the corresponding slots on the printer.)



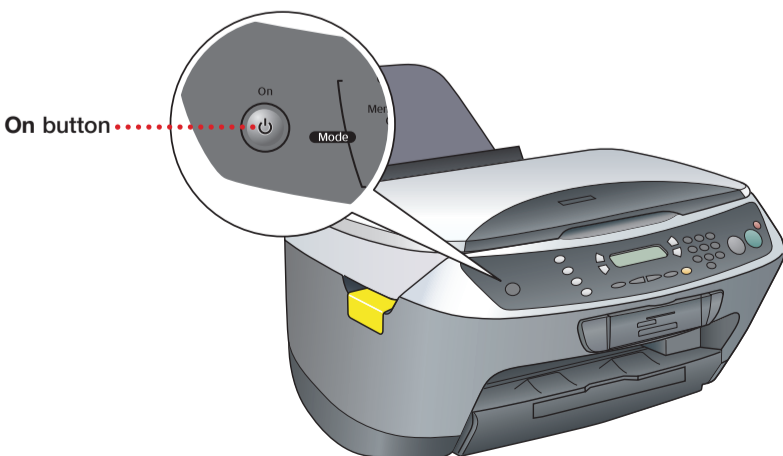
## 3

# Plug In and Turn On

- 1 Plug the Stylus CX into a grounded electrical outlet.



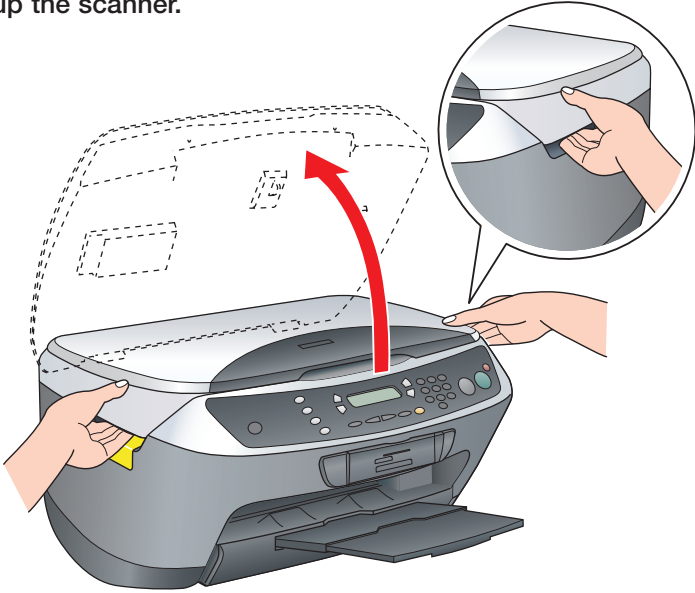
- 2 Press and hold the On button until the green lights come on.



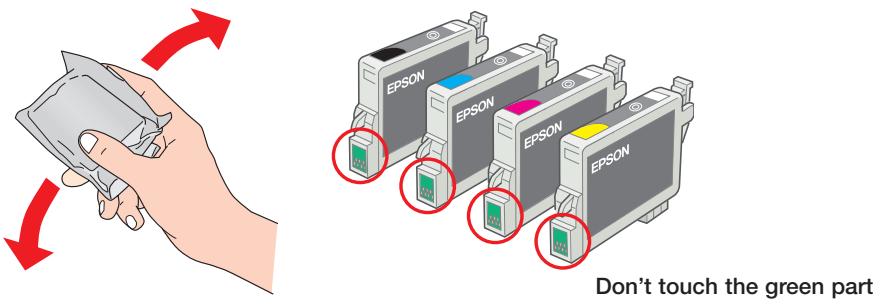
# 4

## Install Ink Cartridges

- 1 Wait until you see “Initial Charge” displayed on the LCD screen.
- 2 Lift up the scanner.

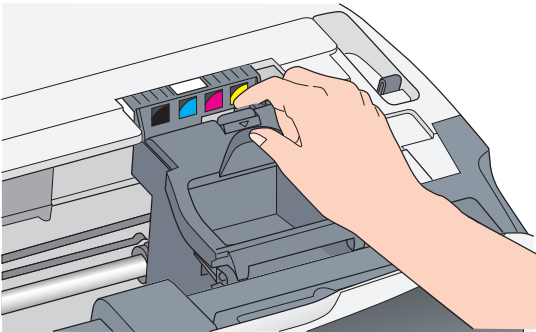


- 3 Shake the package of ink cartridges four or five times. Then remove the cartridges from the package.

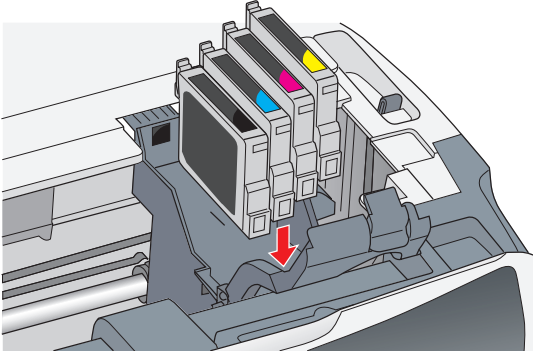


**Caution:** You must install all the cartridges and leave them installed for all types of printing. To avoid damaging the Stylus CX, never move the print head by hand.

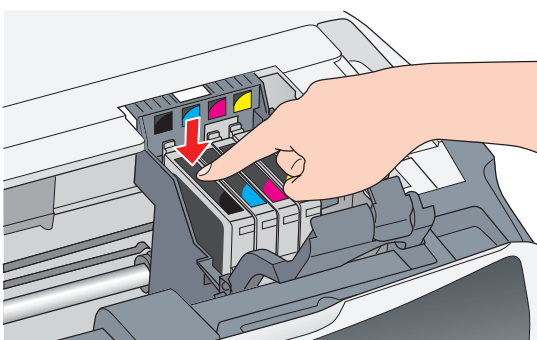
- 4 Open the ink cartridge cover.



- 5 Place each cartridge, one at a time, in its holder.

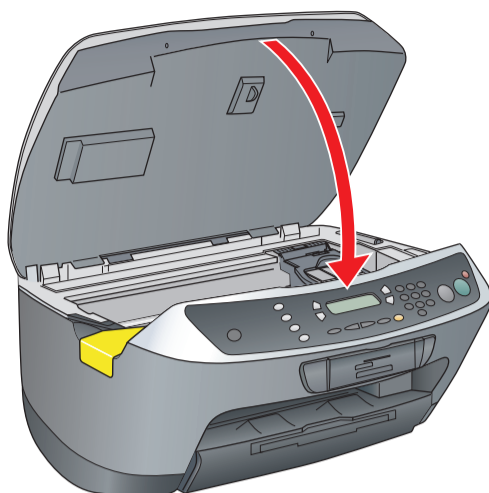


- 6 Press down on each cartridge until it clicks into place.



**continue**

- 7** Close the ink cartridge cover, then close the scanner.

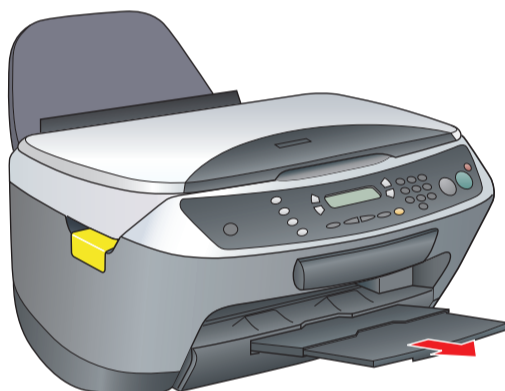


The Stylus CX begins charging the ink delivery system.

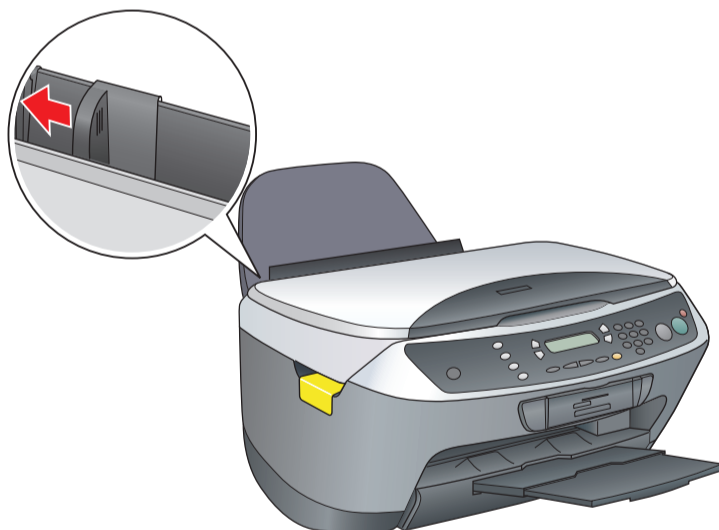
Charging takes about 2 minutes. The Stylus CX makes various sounds and “Charging . . .” appears on the LCD screen. Don’t turn it off while “Charging . . .” appears, or you’ll waste ink.

## 5 Load Paper

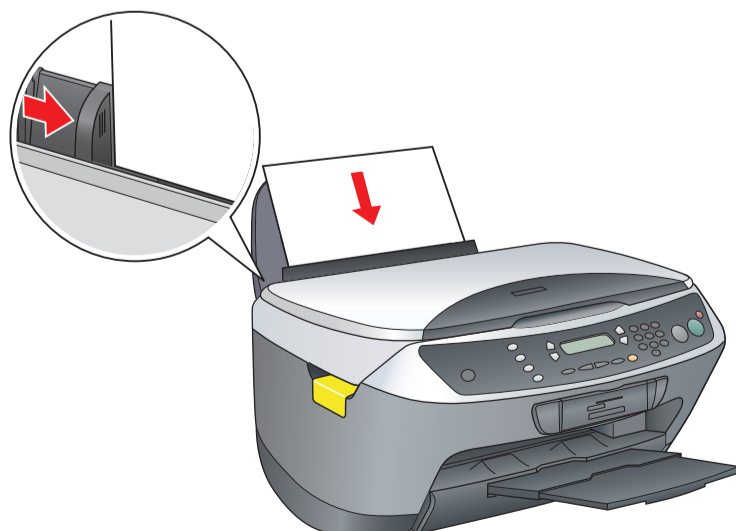
- 1** Extend the output tray.



- 2** Slide the edge guide to the left.



- 3** Place a stack of paper against the right side of the sheet feeder, but don’t push it in. Slide the edge guide against the paper.



**Turn over . . . . .** 

## 6

# Install Software and Connect to Your Computer

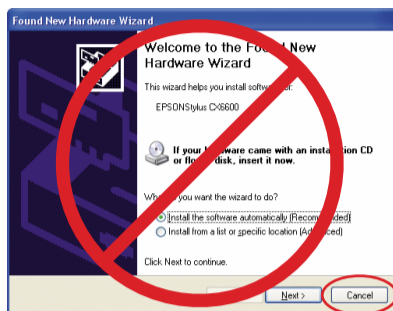
The software works with Windows® 98SE, Me, 2000, and XP, and Macintosh® OS 9.1.x to 9.2.x and 10.2.x to 10.3.x. Follow the steps below (for Windows), or the steps in the next column (for Macintosh).

**Note:** There is a Security Lock program on your software CD-ROM that lets you prevent unauthorized use of your CX6600. See the *Quick Guide* for instructions on installing and using it.

## Windows

- 1 Make sure the Stylus CX is not connected to your computer, then turn on your computer.

**Note:** If you see several New Hardware Wizard screens, click **Cancel** for each of these screens and disconnect your Stylus CX. You can't install your software that way.

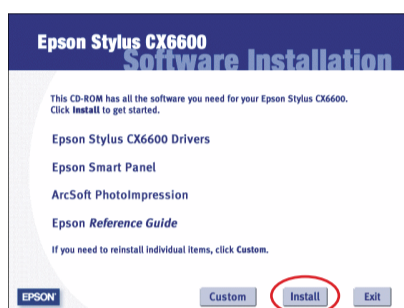


- 2 Insert your Stylus CX software CD-ROM in your CD-ROM or DVD drive.

- 3 Wait until you see this screen, then click **Install**.

**Note:** If you don't see this screen, do the following:

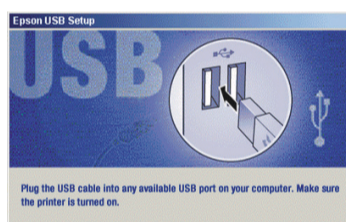
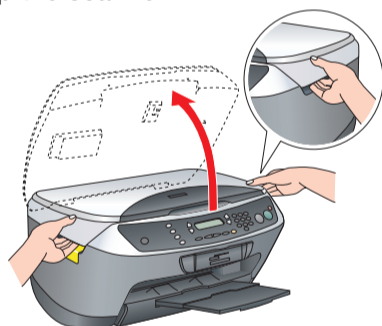
**For Windows XP:** click **Start > My Computer**. Then double-click the Epson CD-ROM icon.



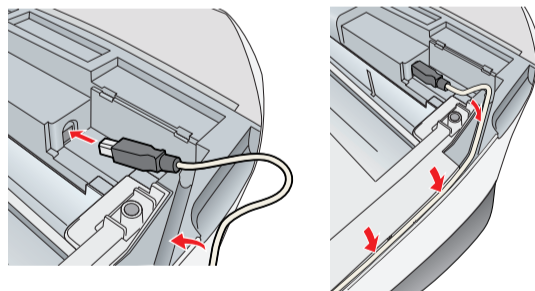
**For Windows 98/Me/2000:** double-click **My Computer**. Then double-click the Epson CD-ROM icon.

- 4 Read the license agreement, then click **Agree**. Several messages display on your screen.

- 5 When you see this screen, make sure your Stylus CX is turned on, then lift up the scanner.



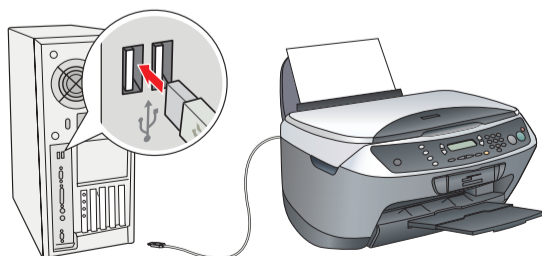
- 6 Remove the yellow sticker and plug the square end of the USB cable into the USB port on your Stylus CX. Then route the cable in the slot as shown.



**Caution:** Make sure the USB cable fits securely into the slot. The USB connector may snap if the cable is not routed correctly in the slot and the scanner is closed with force.

- 7 Close the scanner carefully.

- 8 Plug the flat end of the cable into any available USB port on your computer.



- 9 Click **Next** and follow the instructions on the screen to install more software.

**Note:** It will take several minutes to install the software. Don't cancel the installation.



- 10 At the completion screen, print a test page, if desired. When done, click **Next** to install additional software.

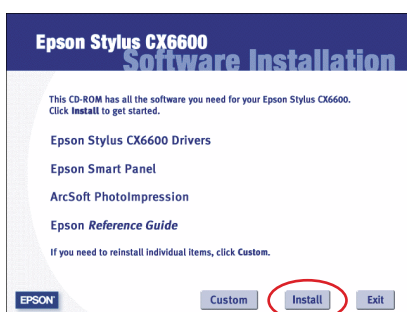
- 11** Follow the instructions on the screen to install additional software. When done, click **Exit**.
- 12** When you see the Product Registration screen, register your Stylus CX as instructed, then remove the CD-ROM and restart your computer.

Now you're ready to copy, scan, and print. See the *Quick Guide* or your on-screen *CX6600 Reference Guide* for instructions.

## Macintosh

- 1** Insert your Stylus CX software CD-ROM into your CD-ROM or DVD drive.

- 2** Double-click the  **Epson** CD-ROM icon, if necessary. Then double-click the  **Epson** installer icon. You see this screen:



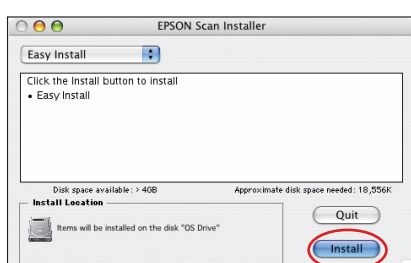
- 3** Click **Install**.
- 4** Read the license agreement, then click **Agree**.

**Note:** If you're installing on Macintosh OS X, enter your administrator name and password, if necessary.

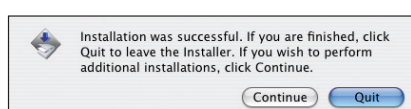
- 5** For Macintosh OS X: Continue with the following steps.

For Macintosh OS 9: Follow any on-screen instructions, then continue with step 9.

- 6** Click **Install** at the EPSON Scan Installer screen to install the scanner portion of your software.



- 7** When the software finishes installing, you see this screen. Click **Quit**.



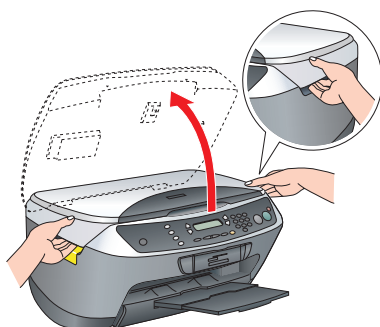
- 8** Follow the on-screen instructions to install additional software.

**Note:** Click **Quit** when each part finishes installing.

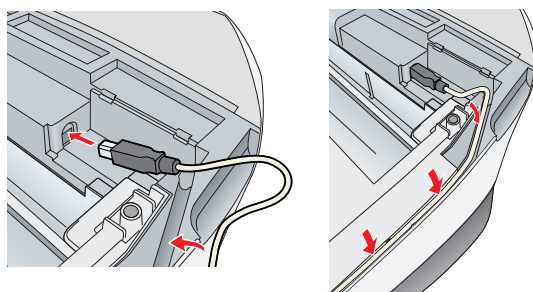
- 9** When installation is complete, you see the Additional Software screen. Follow the instructions on the screen to install the software. When done, click **Exit**.

- 10** When you see the Product Registration screen, register your Stylus CX as instructed, then remove the CD-ROM and restart your Macintosh.

- 11** Make sure your Stylus CX is turned on, then lift up the scanner.



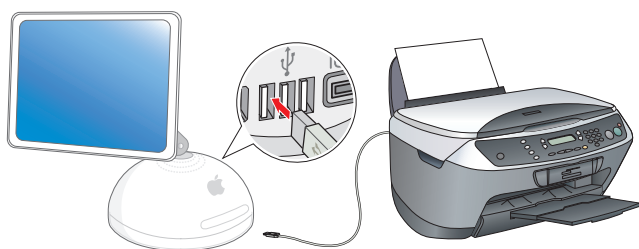
- 12** Remove the yellow sticker and plug the square end of the USB cable into the USB port on your Stylus CX. Then route the cable in the slot as shown.



**Caution:** Make sure the USB cable fits securely into the slot. The USB connector may snap if the cable is not routed correctly in the slot and the scanner is closed with force.

- 13** Close the scanner carefully.

- 14** Plug the flat end of the cable into any available USB port on your Macintosh.

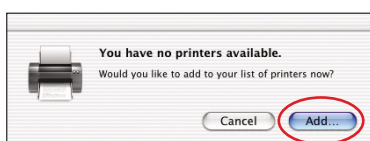


Follow the instructions below to add the Stylus CX to the Print Center or Printer Setup Utility (for OS X) or the Chooser (for OS 9).

## Selecting the Stylus CX for Mac® OS X

- 1** Open the OS X Applications folder, then open the Utilities folder and start Print Center or the Printer Setup Utility.

If you see this screen, click Add.

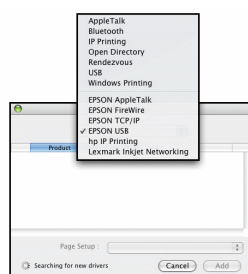


- 2** On the Printer List screen, click the Add button.

- 3** On the next screen, select EPSON USB from the pop-up menu.

- 4** Click Stylus CX6600.

**Note:** If the CX6600 doesn't appear, make sure it is turned on and securely connected to your Macintosh.



- 5** Click the Add button. You see the Stylus CX6600 in the Printer List.

- 6** Quit Print Center or the Printer Setup Utility. Now you're ready to copy, scan, and print. See the *Quick Guide* or your on-screen *CX6600 Reference Guide* for instructions.

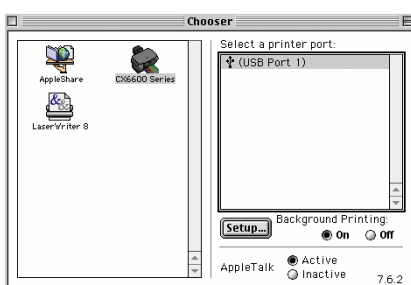
- 7** If you use Classic Mode applications, install the software on OS 9 also.

## Selecting the Stylus CX for Mac OS 9

- 1** Open the Chooser from the Apple® menu.

- 2** Select CX6600 Series, then select your USB port and turn on background printing.

- 3** Close the Chooser. Now you're ready to copy, scan, and print. See the *Quick Guide* or your on-screen *CX6600 Reference Guide* for instructions.



# Any Problems?

If the red ! error light is on, check the message on the Stylus CX. Try turning the Stylus CX off and then back on to clear the error. If your problem is listed here, try these suggestions. For more information, see your *Quick Guide*, software Help, or on-screen *CX6600 Reference Guide*.

**The Found New Hardware Wizard appears on your screen.**

Click Cancel and follow the steps in section 6. Disconnect the Stylus CX before installing the software.

**You see an error message when you try to print or scan.**

Make sure your Stylus CX is connected to your computer, plugged into a power source, and turned on.

**The Stylus CX doesn't work.**

Make sure you removed the tape from the ink cartridge holder, as described in section 1. Turn the Stylus CX off and then on again.

Make sure the ink cartridges are pushed all the way down.

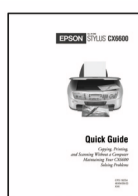
Check the LCD screen to see if you or someone else set the Security Lock. See your *Quick Guide* for details.

Make sure your Epson Stylus CX6600 software is installed correctly.

# Any Questions?

Here's where to look for answers:

**Epson Stylus CX6600 Quick Guide** .....



## On-screen Reference Guide

Double-click the **CX6600 Reference Guide** icon on your desktop to view your *Reference Guide*.

## On-screen help for EPSON Smart Panel™, ArcSoft PhotolImpression™, EPSON Scan, and ABBYY® FineReader® Sprint

Click the **Help** button or question mark that appears on the screen when you're using any of these programs.

## Epson Technical Support (Stylus CX6600 and EPSON Scan)

- **World Wide Web**  
<http://support.epson.com>
- **Automated Telephone Services**  
To use these services, you must have a touch tone telephone and call (800) 922-8911. Your Epson SoundAdvice<sup>SM</sup> Express Code is 70575. Use this code to quickly select your product in SoundAdvice.
- **To speak to a Technical Support Representative**  
Dial (562) 276-4382 (U.S.) or (905) 709-3839 (Canada), 6 AM to 6 PM, Pacific Time, Monday through Friday. Toll or long distance charges may apply.

## Software Technical Support

Software	Telephone and Fax	Internet and E-mail
EPSON Smart Panel	(510) 445-8616 Fax: (510) 445-8601	<a href="http://www.newsoftinc.com">www.newsoftinc.com</a> <a href="mailto:tech@newsoftinc.com">tech@newsoftinc.com</a>
ArcSoft PhotolImpression	(510) 440-9901 8:30 AM to 5:30 PM, Pacific Time, Monday-Friday Fax: (510) 440-1270	<a href="http://www.arcsoft.com/techmain">www.arcsoft.com/techmain</a> <a href="mailto:support@arcsoft.com">support@arcsoft.com</a>
ABBYY FineReader Sprint	(510) 226-6719 Fax: (510) 226-6069	<a href="http://www.abbyyusa.com">www.abbyyusa.com</a> <a href="mailto:support@abbyyusa.com">support@abbyyusa.com</a>

# Need Paper and Ink?

For the best prints and copies, use genuine Epson ink and paper. You can buy them from your local retailer or from the Epson Store<sup>SM</sup> at (800) 873-7766, or visit [www.epsonstore.com](http://www.epsonstore.com) (U.S. sales only). In Canada, please call (800) 463-7766 for dealer referral.

Look for these cartridges and paper:



<b>T0441</b>	<b>T0431</b>	<b>T0442</b>	<b>T0443</b>	<b>T0444</b>
Standard Capacity Black Ink Cartridge	High Capacity Black Ink Cartridge	Cyan Ink Cartridge	Magenta Ink Cartridge	Yellow Ink Cartridge



**Premium Bright White Paper**  
Ultra-smooth white paper perfect for everyday use—especially two-sided documents.



**DURABrite® Ink Glossy Photo Paper**  
Heavier weight paper for long-lasting enlargements and snapshots.



**Double-Sided Matte Paper**  
The ideal paper for high quality printing of brochures, newsletters, or flyers.

Epson and Epson Stylus are registered trademarks and EPSON Smart Panel is a trademark of Seiko Epson Corporation. DURABrite is a registered trademark, and Epson Store and SoundAdvice are service marks of Epson America, Inc.

General Notice: Other product names used herein are for identification purposes only and may be trademarks of their respective owners. Epson disclaims any and all rights in those marks.

© 2004 Epson America, Inc. 5/04